

ALL DIMENSIONS ARE APPROXIMATE

*LOT#: 566-13D PROJECT: CAMPBELL STREET*

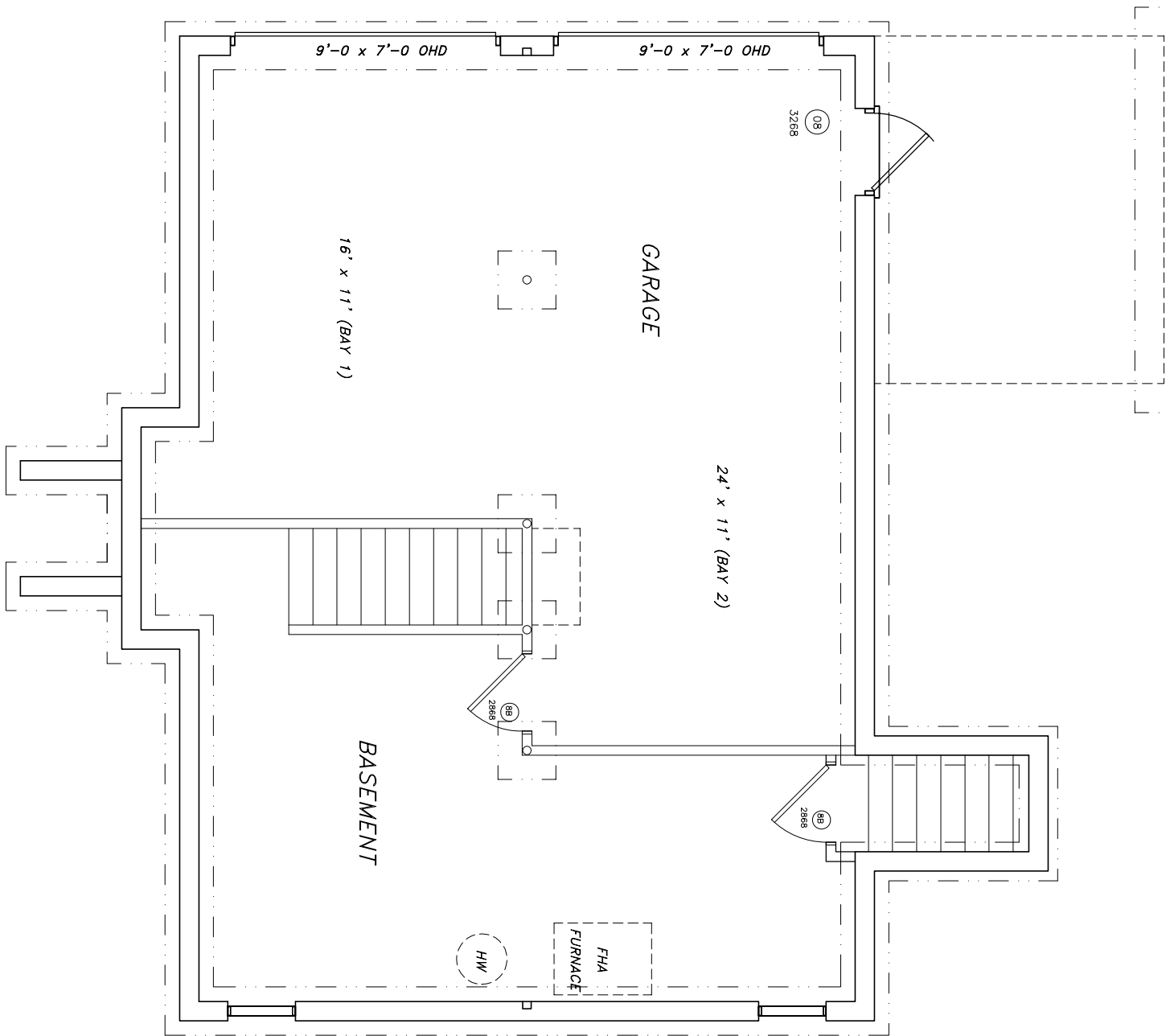
*MODEL: NEW HOUSE*

*10/16/09*

DUE TO CONTINUOUS IMPROVEMENTS, EXISTING FLOOR PLANS AND MATERIALS ARE SUBJECT TO CHANGE WITHOUT NOTICE. SOME HOMES ARE BUILT MIRROR IMAGE TO THOSE SHOWN. ALSO, IN THE INTEREST OF VARIETY, DOOR, WINDOW, GARAGE POSITIONS AND ELEVATION TREATMENTS MAY VARY. LAMONTAGNE BUILDERS, INC. RESERVES THE RIGHT TO SET GRADES, ELEVATIONS, AND REVERSE PLANS AS DEEMED APPROPRIATE FOR THE SUBDIVISION.

© 2008 BY LAMONTAGNE BUILDERS, INC.

ELEVATIONS



ALL DIMENSIONS ARE APPROXIMATE

LOT#: 566-13D PROJECT: CAMPBELL STREET

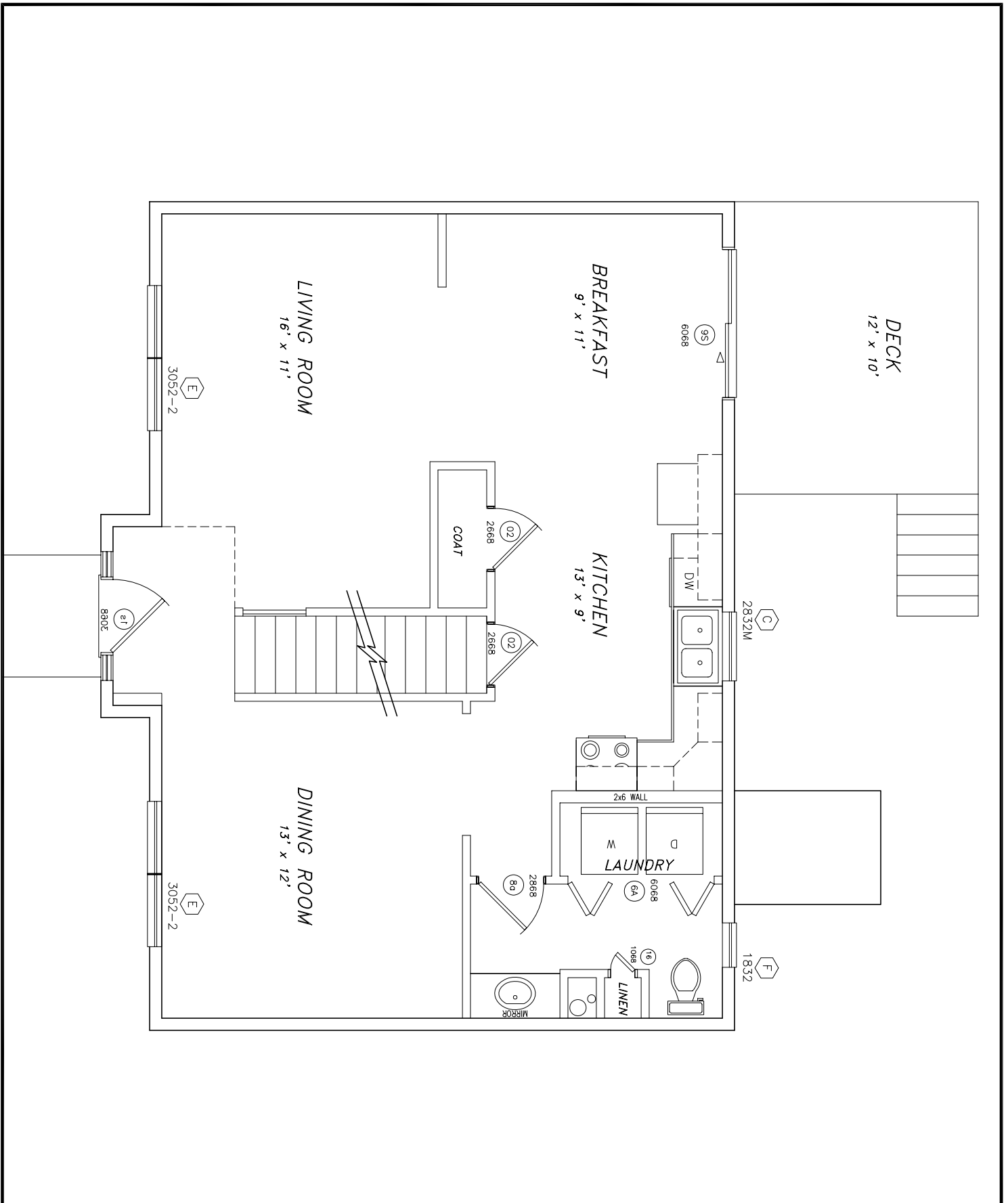
MODEL: NEW HOUSE

10/16/09

DUE TO CONTINUOUS IMPROVEMENTS, EXISTING FLOOR PLANS AND MATERIALS ARE SUBJECT TO CHANGE WITHOUT NOTICE. SOME HOMES ARE BUILT MIRROR IMAGE TO THOSE SHOWN. ALSO, IN THE INTEREST OF VARIETY, DOOR, WINDOW, GARAGE POSITIONS AND ELEVATION TREATMENTS MAY VARY. LAMONTAGNE BUILDERS, INC. RESERVES THE RIGHT TO SET GRADES, ELEVATIONS, AND REVERSE PLANS AS DEEMED APPROPRIATE FOR THE SUBDIVISION.

© 2008 BY LAMONTAGNE BUILDERS, INC.

FOUNDATION PLAN



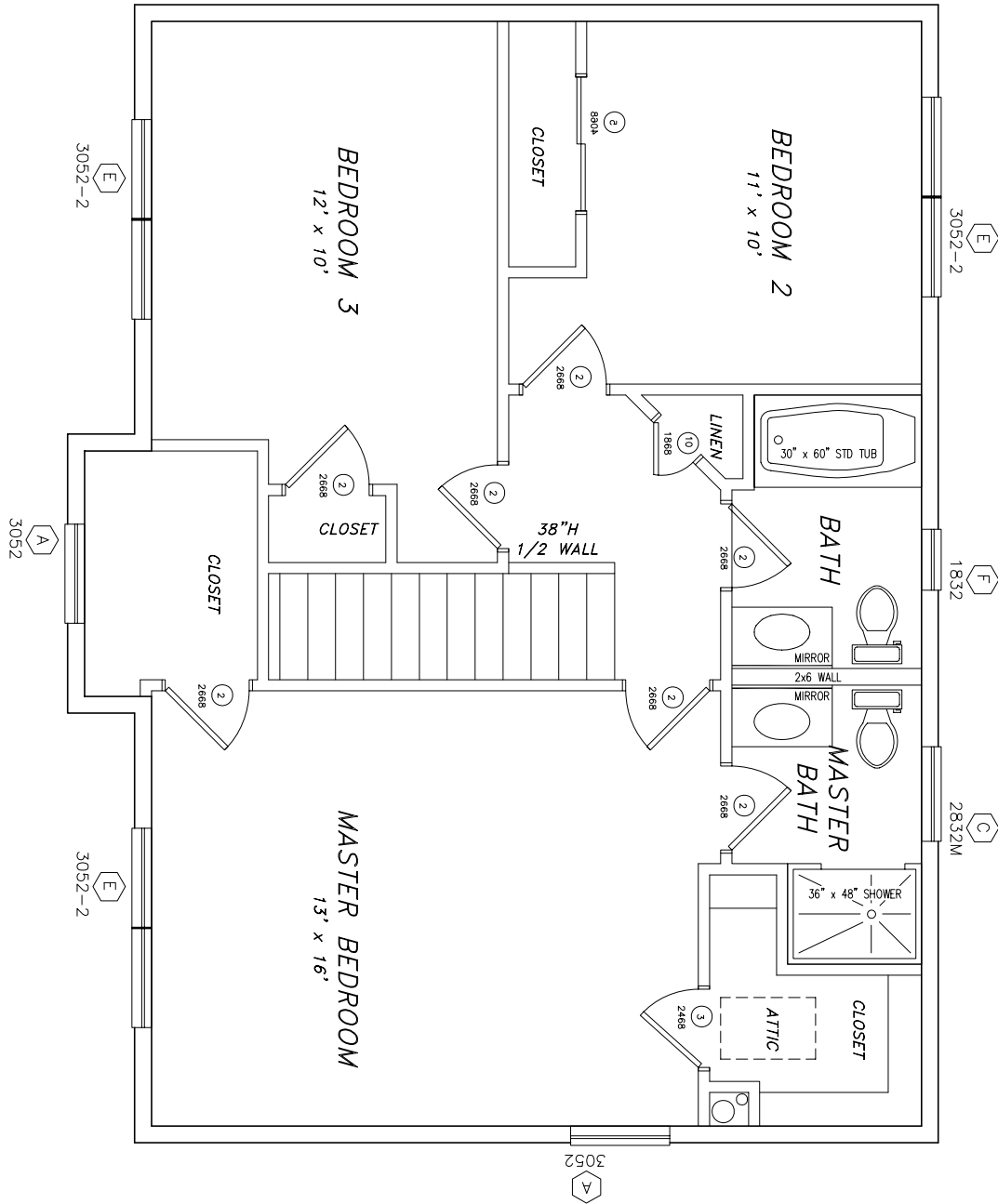
ALL DIMENSIONS ARE APPROXIMATE

LOT#: 566-13D PROJECT: CAMPBELL STREET

MODEL: NEW HOUSE

10/16/09

DUE TO CONTINUOUS IMPROVEMENTS, EXISTING FLOOR PLANS AND MATERIALS ARE SUBJECT TO CHANGE WITHOUT NOTICE. SOME HOMES ARE BUILT MIRROR IMAGE TO THOSE SHOWN. ALSO, IN THE INTEREST OF VARIETY, DOOR, WINDOW, GARAGE POSITIONS AND ELEVATION TREATMENTS MAY VARY. LAMONTAGNE BUILDERS, INC. RESERVES THE RIGHT TO SET GRADES, ELEVATIONS, AND REVERSE PLANS AS DEEMED APPROPRIATE FOR THE SUBDIVISION.



ALL DIMENSIONS ARE APPROXIMATE

LOT#: 566-13D PROJECT: CAMPBELL STREET

MODEL: NEW HOUSE

10/16/09

DUE TO CONTINUOUS IMPROVEMENTS, EXISTING FLOOR PLANS AND MATERIALS ARE SUBJECT TO CHANGE WITHOUT NOTICE. SOME HOMES ARE BUILT MIRROR IMAGE TO THOSE SHOWN. ALSO, IN THE INTEREST OF VARIETY, DOOR, WINDOW, GARAGE POSITIONS AND ELEVATION TREATMENTS MAY VARY. LAMONTAGNE BUILDERS, INC. RESERVES THE RIGHT TO SET GRADES, ELEVATIONS, AND REVERSE PLANS AS DEEMED APPROPRIATE FOR THE SUBDIVISION.